

# HyperReveal SERVER

A UNIQUE AI/ML SOLUTION PROCESSING FULL-MOTION VIDEO

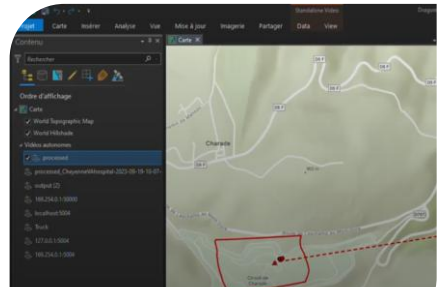
Pre-trained on operational data, **HyperReveal SERVER** AI/ML solution enables **real-time processing** of EO/IR FMV data to **detect, classify, and track** military objects of interest



**DECREASE THE OPERATOR COGNITIVE LOAD**



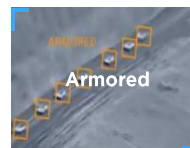
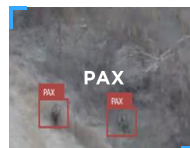
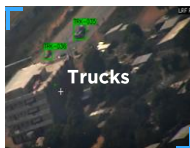
**NARROW-DOWN RESEARCH OF HIGH-VALUE TARGET**



**ACCELERATE VIDEO FORENSICS**

## AI DETECTORS

EO and IR | Detect, classify, and track | Real-time processing



### OPERATIONAL ENVIRONMENTS

Deployed in Global Critical Access and Influence Zones

### MULTIPLE SENSORS

Pre-trained on operational data from MQ-9 Reaper MST-B, MX-15, MX-20, FLIR 350, DJI, etc.

### ROBUST TO MODE CHANGES

Robust to changes in sensor fields (narrow/wide) and changes in acquisition mode (EO/IR)



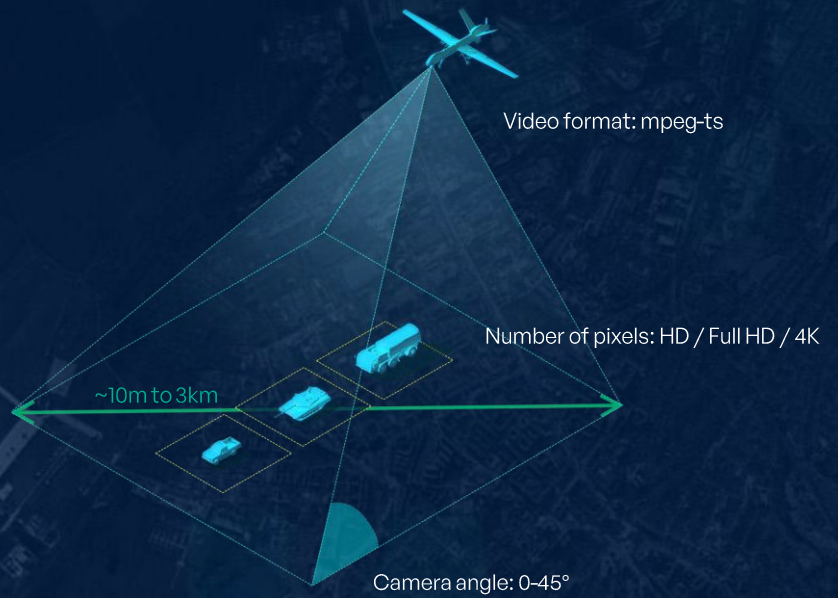
# TECHNICAL REQUIREMENTS

## Input

- Video Format type .....mpeg-ts (4609 STANAG)
- Number of pixels .....HD / Full HD / 4K
- Camera angle.....0-45°
- Ground screen width.....10m to ~3km (- 30 to ~10,000ft)

## Output

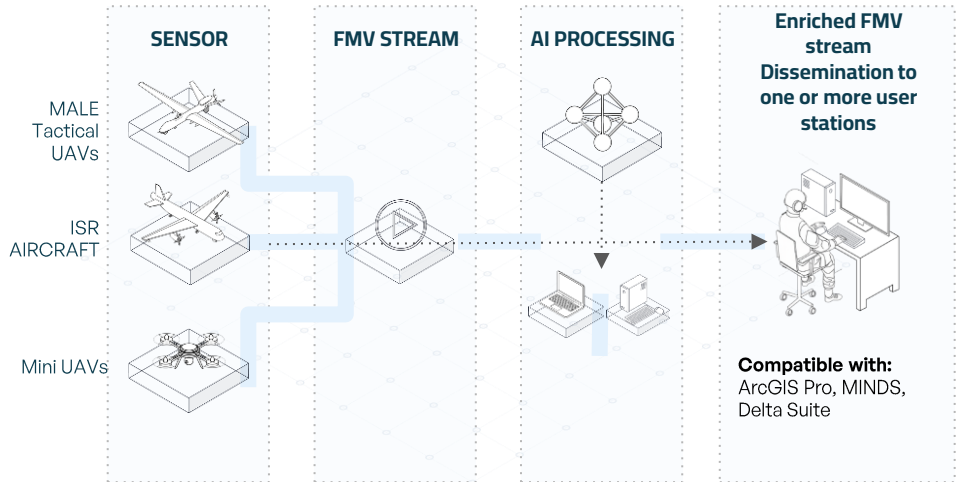
- Video format.....4609 STANAG video
- Vectors formats ..... Geojson, Shapefile, KML



# DEPLOYMENT CONFIGURATIONS

**GROUND CONTROL STATION PROCESSING**  
TOWER SERVER OR RUGGED LAPTOP

**ONBOARD PROCESSING**  
RUGGED LAPTOP OR JETSON ORIN TYPE



# Man-Machine Teaming to unlock with key functionalities

- Enrich** the vehicle's metadata with speed, direction, GPS coordinates, etc.
- Alert** on any potential threat (static or mobile)
- Highlight relevant information** by filtering vehicle types (trucks, motos, military, etc.)
- Convert into vector format** every detection and its associated tracks within a basemap layer